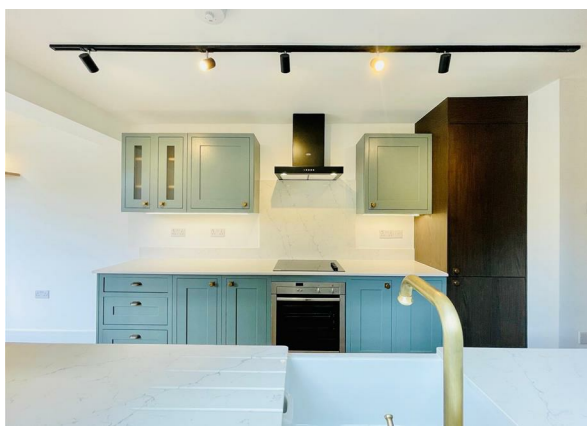
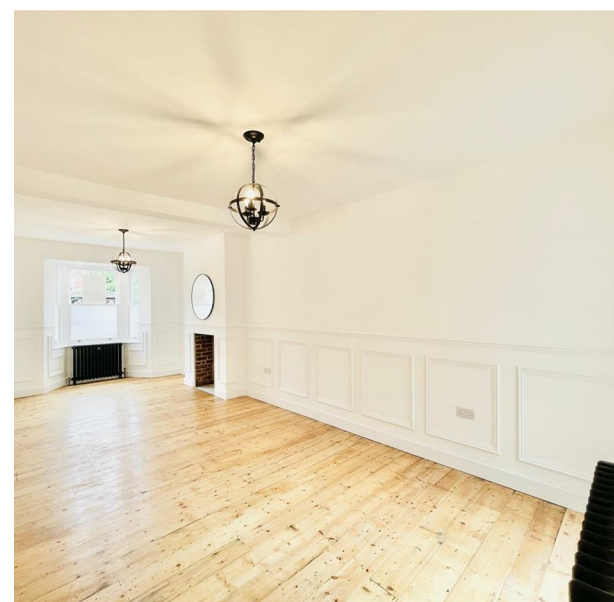
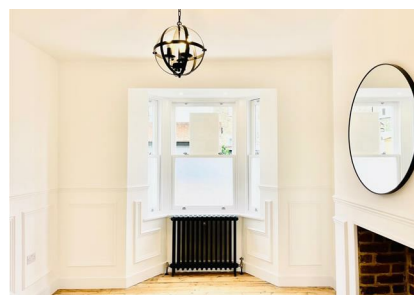


20 Aubrey Road, London, Greater London, E17 4SL  
Guide Price £950,000

COMPLETION  
SALES & LETTINGS





20 Aubrey Road, London, Greater London, E17 4SL

Guide Price £950,000

Council Tax Band: C

CHAIN FREE | THREE BEDROOMS | EXCELLENT LOCATION | VICTORIAN PROPERTY | NEWLY REFURBISHED | CLOSE TO TUBE STATION

Introducing an exquisite opportunity in the heart of Walthamstow Village, E17. Nestled amidst the vibrant streets of this historic locale, a newly refurbished property awaits its grand unveiling. Boasting modern amenities paired with timeless charm, this residence promises an unparalleled living experience. From its tastefully appointed interiors to its coveted location, every detail has been carefully curated to offer the epitome of comfort and convenience. Stay tuned for the imminent arrival of this remarkable home, where luxury meets heritage in one of London's most sought-after neighbourhoods.









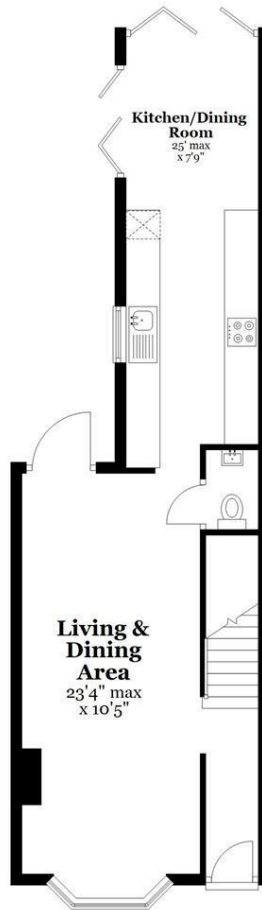






## Ground Floor

Approx. 520.7 sq. feet



## First Floor

Approx. 514.8 sq. feet



Total area: approx. 1035.4 sq. feet

337 Forest Road

London

E17 5JR

02085277007

enquiries@completion.co.uk

completion.co.uk

Energy Efficiency Rating		
	Current	Potential
Very energy efficient - lower running costs		
(92 plus) <b>A</b>		<b>81</b>
(81-91) <b>B</b>		
(69-80) <b>C</b>		
(55-68) <b>D</b>		
(39-54) <b>E</b>	<b>54</b>	
(21-38) <b>F</b>		
(1-20) <b>G</b>		
Not energy efficient - higher running costs		
England & Wales		EU Directive 2002/91/EC